



the embankment

jersey city, new jersey

graphics - final portfolio
jessica hubbard

background

harismus stem embankment

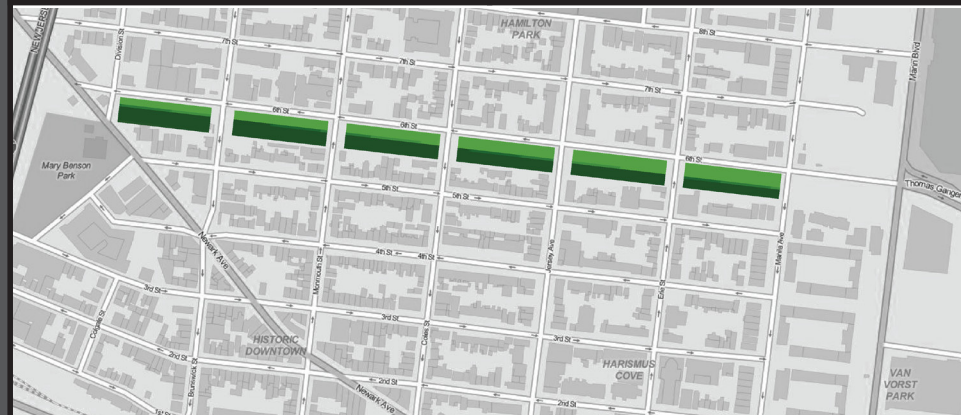
located amongst nine historic districts in downtown jersey city, the embankment is an elevated structure that once supported the tracks of the pennsylvania railroad to the hudson river waterfront. as of 1999, the structure itself is also recognized on the state register of historic places and is identified as a municipal landmark. running east to west on sixth street , the embankment is broken into 6 different blocks and is approximately a half mile long. built in 1902, the embankment is constructed from massive sandstone and granite blocks. up until 1996, each segment had been connected by plate girder bridges. as this railway cut through primarily residential zones, it has historically had a great impact on local life, and regional economic and social development.

currently, the embankment has the potential to provide citizens with open green space in a city that is lacking access to parks. the structure also plays a role in the stormwater management of downtown and serves as a vital habitat for the various species, such as the monarch. further, the embankment is a proposed segment of the east coast greenway, which is a 2600-mile walking and bicycling trail from maine to florida.

since 1998, however, redevelopment proposals have threatened to demolish this stone structure. its demolition could result in detrimental environmental impacts on downtown jersey city.



source: www.flickr.com/photos/wallyg



source: www.preservationnj.wordpress.com

embankment preservation coalition

this coalition, supporting the preservation of the massive stone structures, stands behind a nine-year debate for the embankment's survival. formed in 1998, the coalition was a response to neighborhood concern over the demolition of the structure and its redevelopment. various redevelopment plans proposed replacing the structures with residential skyscrapers or high-end apartments. now a 501(c)3 organization comprised of approximately 1000 supporters, the coalition's efforts were most recently vindicated by the unanimous approval from the jersey city municipal council to preserve five of the six blocks (february 2012).

stacked seating



source: www.everytrail.com

inspiration

highline park, new york city

much comparison has been drawn between possible concepts for the embankment space and the highline park in new york city. the highline provides a highly successful example of converted, elevated rail tracks to practical and accessible open space. the following design proposal considers many popular features the highline offers, such as an open grass area, lounge seating, movable seating, and intuitive paths. this portfolio also contemplates the creation of a water feature, food establishments, and a more open placement of public restrooms. also considered was one conceptual rendering provided by the embankment preservation coalition (below).



source: www.inhabitots.com

open grass

lounge seating



source: www.treehugger.com

initial embankment design



source: www.places.designobserver.com

curved paths



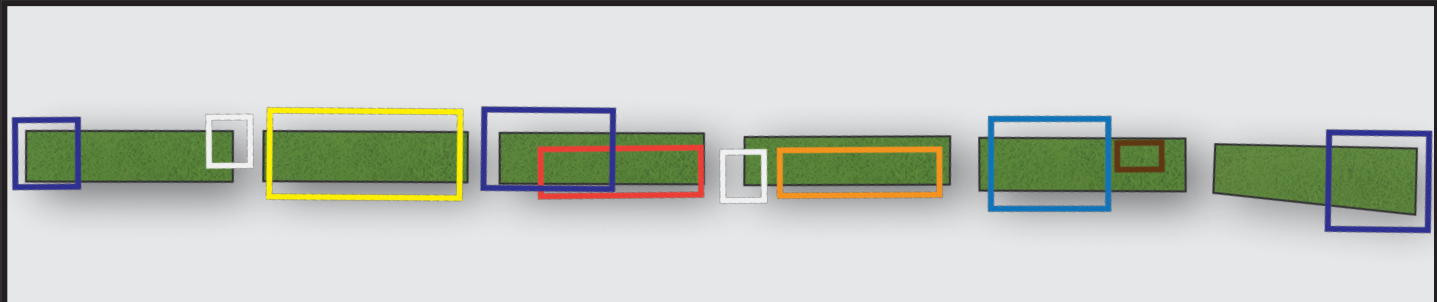
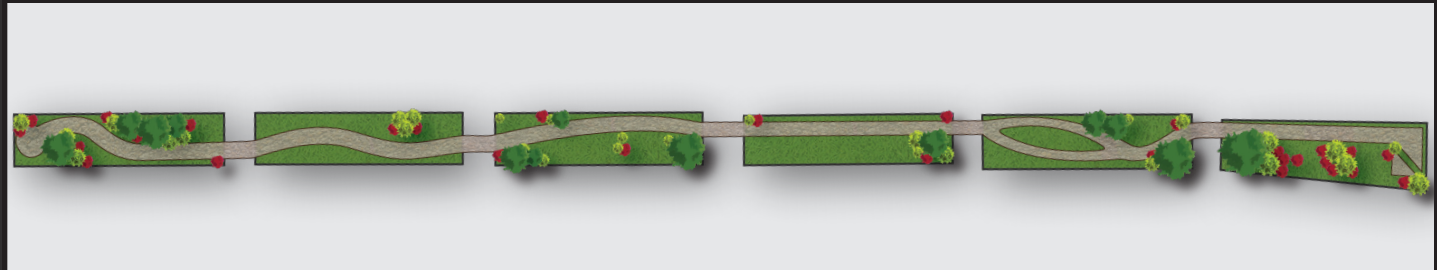
source: www.jelandmarks.org

site plan

general

illustrator

- seating area
- community garden/greenhouse
- food area
- dog park/open lawn
- water feature
- restrooms
- stair access
- path outline
- grass/embankment outline
- street blocks affected
- foilage



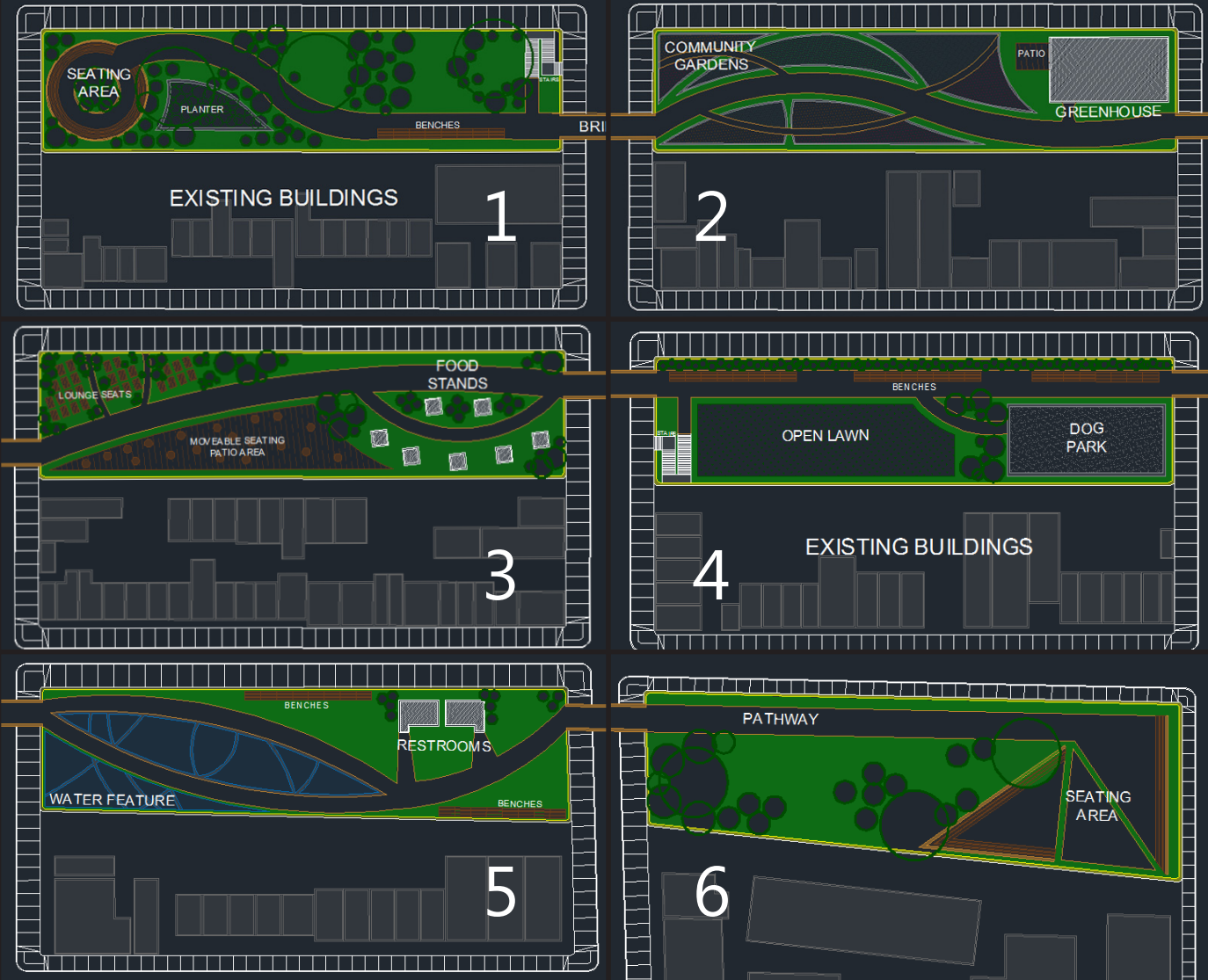
site plan

detailed

autoCAD

details proposed:

- connecting bridges
- multiple benches
- various planting beds
- greenhouse and patio
- lounge seating
- moveable patio seating
- 7 food stands
- gated dog park
- open grass space
- reflecting pool
- stacked seating
- possible amphitheater



site renderings

sketchUp



1



2



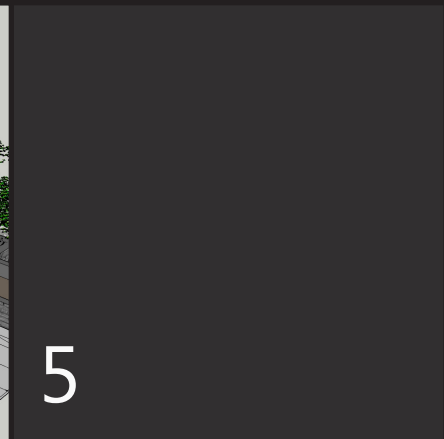
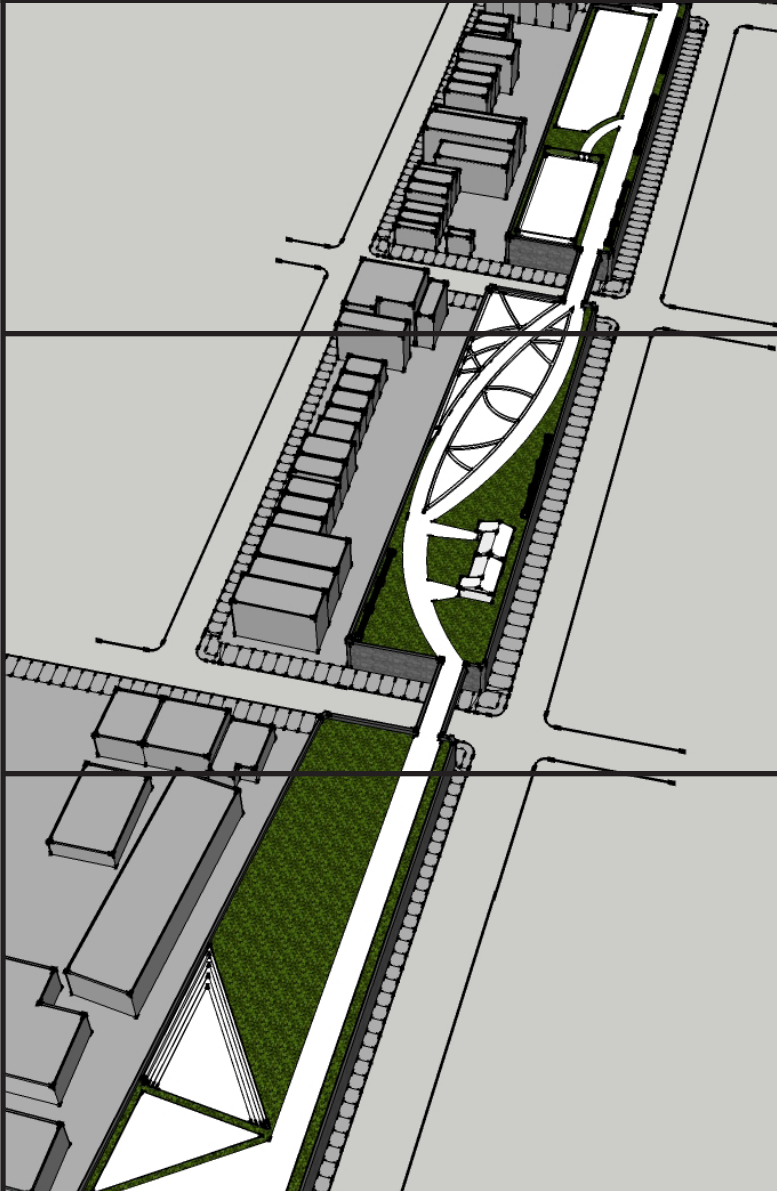
3



- 1 - first block - circular seating area, multiple benches, planting bed, stair access
- 2 - second block - community gardens (vegetable gardens), greenhouse, greenhouse patio
- 3 - third block - lounge seating, food huts, patio area with movable seating

sketchUp

site renderings



multiple benches, gated dog park, lawn area for recreation, stair access - fourth block - 4
accessible water feature, fountain, multiple benches, restrooms - fifth block - 5
linear seating area, triangular seating area with possible stage, largest tree space - sixth block - 6

photo simulation

photoshop



proposed changes

- stair access
- bike lane
- tree lined streets
- above-ground planter
- embankment logo



photoshop

photo simulation



proposed changes

stone restoration -

sidewalk access -

lined hedging -

landscape street buffer -

