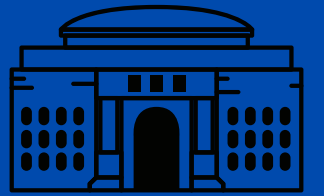


APPLIED FIELD EXPERIENCE 2020



# Completing the Policy Puzzle – How the Legislature and Agencies Act in Pursuit of Policy Goals

Munsif Husami

# ROADMAP

**Background - Office of Asm. Karabinchak**

**Policy Functions**

**Specific fieldwork breakdown**

**Background - NJ Economic Development Authority**

**Policy Functions**

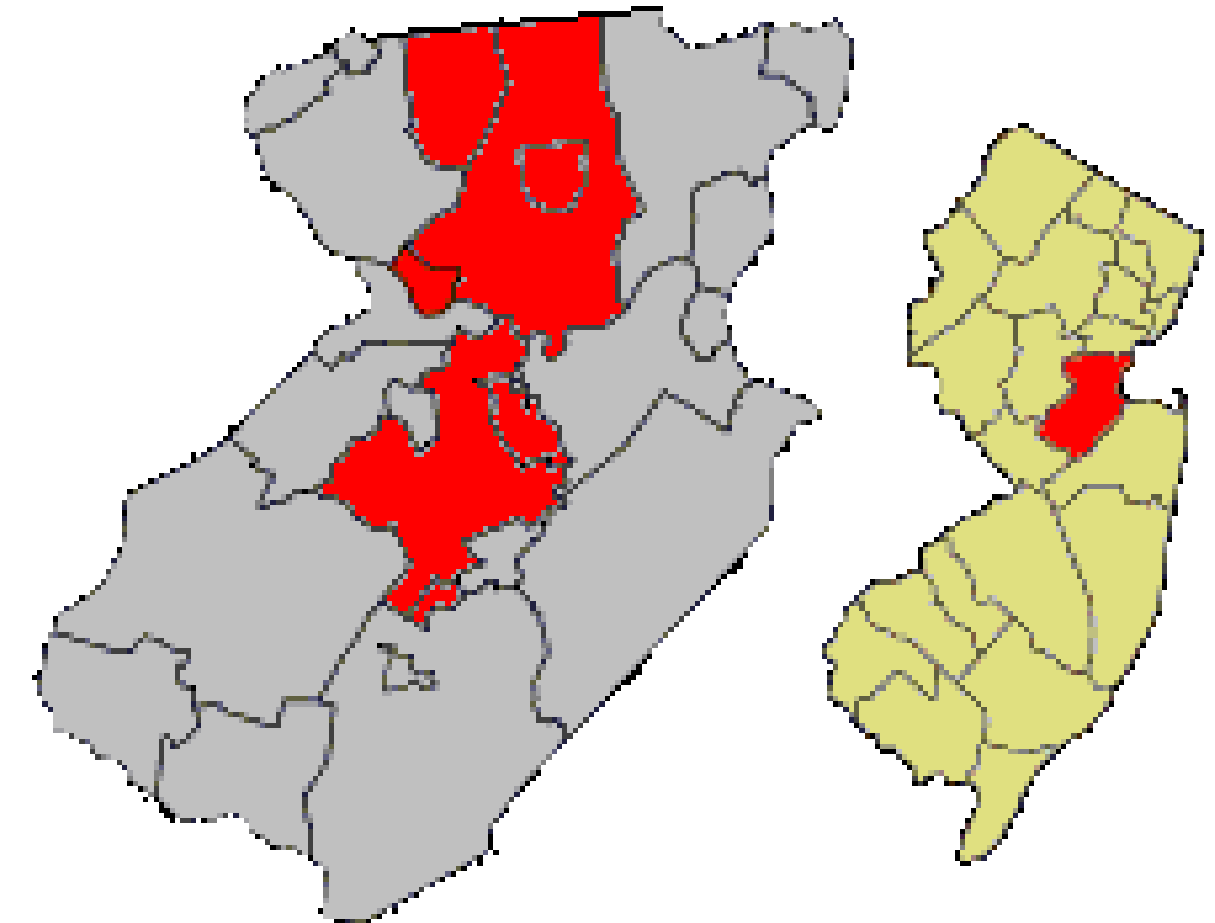
**Specific fieldwork breakdown**

**Coursework Connection**

**Key Takeaways**

**Q & As**

# DISTRICT OFFICE OF ASSEMBLYMAN KARABINCHAK



One of 3 Legislative Offices representing LD-18  
Assemblyman is a present incumbent since 2016  
Member of four Assemblyman committees, Chairing  
one and Vice-Chairing another



# Policy Functions



1

Research on topics of Interest



2

Seek signs of consensus, inertia or precedent



3

Research summarized (factsheets or memos?)



4

Constituent services, COVID-19 Relief



5

Communications, bill reviews

# THE MAKING OF A BILL PROPOSAL

By the milestone

0  
1

## RESEARCH

Factsheet on lead content in drinking water state-wide

0  
2

## REVIEW

Assessed alongside NJ DEP actions on waterways

0  
3

## FRAMING

Creating a bill matches Assemblyman's Committee agenda

0  
4

## DUE DILIGENCE

Cost questions  
"A version for OLS"  
Calling a DEP Senior staffer

0  
5

## CONCLUSION

Submitting to CoS and Legislative Director on May 8th 2020

# NJ ECONOMIC DEVELOPMENT AUTHORITY



**NJEDA**

ECONOMIC DEVELOPMENT AUTHORITY



**Independent government entity founded in 1974**  
**Uses tools like public-private partnerships, incentive programs, incubators and grants to stimulate economic conditions**  
**Presently the assigned state intermediary to disburse CARES Act funding towards affected industries and professionals**



# Policy Functions



## Economic Review

Subject matter experts in every industry field leading caseload



## Program Maintenance

10+ tax and credit incentives, due diligence and enforcement



## Collaborative Creation

Newer initiatives with both public and private sector collaborators



## Forward-facing R&D

Disaster management (Great Recession, Sandy, COVID-19)

# Making the database speak

15 years, 180 months, 500 actions

Framing questions



Board Governance



Devising Variables



Program Management



Data Collection



MOUs



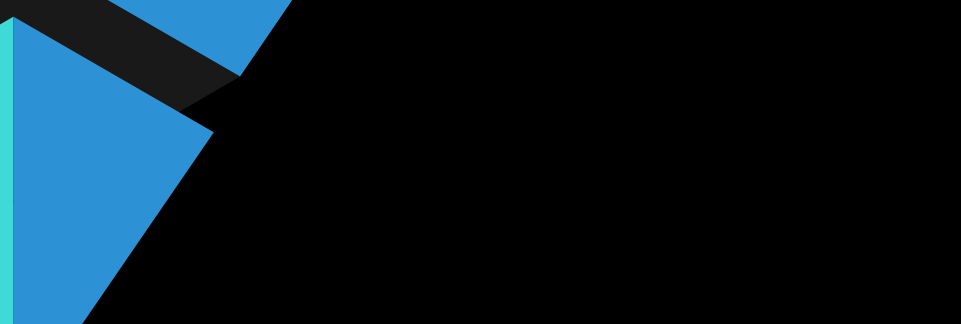
Review/Cleaning



Delegated Authority



Analysis/Summary

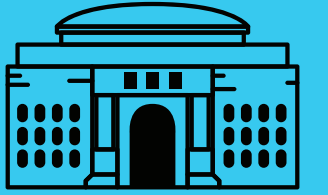


Rules





# The Coursework Connection



## ▶ **RESEARCH DESIGN**

Creating simple, measurable variables  
Framing a clear research question

## ▶ **POLICY FORMATION**

Ability to decipher legislative language, and present summaries for various audiences

## ▶ **STATE/LOCAL PUBLIC FINANCE**

Understanding acronyms, tax credits, and other fiscal terms

## ▶ **ECONOMICS**

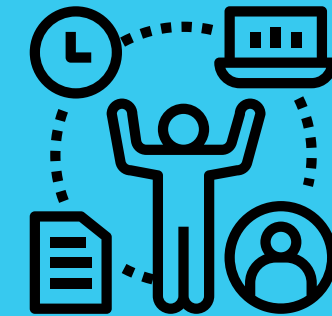
Understanding EDA rationale behind rollout of grant/incentive programs post-2008 and post-COVID outbreak in NJ

# Key Takeaways



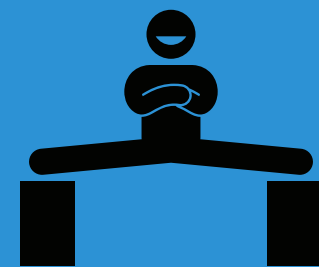
## TANGIBLE SKILLS

Data analysis  
Intermediate Excel  
Crisper topical writing  
Project management



## TRANSFERABLE KNOWLEDGE

Detail-oriented and big-picture mentality



## BALANCING ACT

The pursuit of quantitative and qualitative skills



## R-EADING DATA

Learning statistical programming languages



## A TOUCH OF PLANNING

Bolstering GIS with Housing Policy class

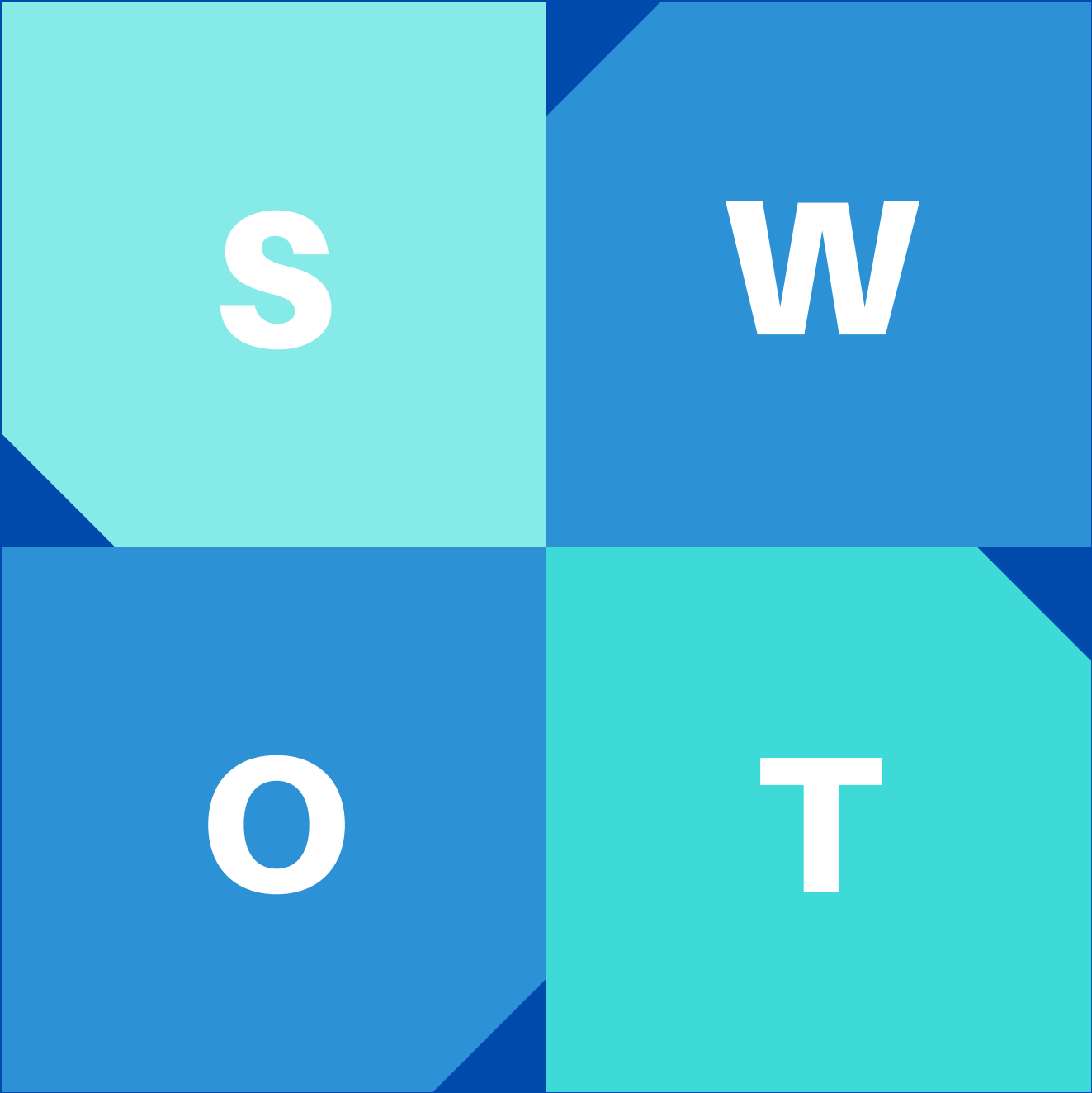
# In the time of COVID-19

## STRENGTHS

DOs are vital conduits for constituents  
State Agencies have perfected disaster management efforts over years of crises

## OPPORTUNITIES

Timing ripe for legislators to introduce strong bills  
Agency evaluations will improve pilot programs launched in Mar 2020



## WEAKNESSES

Forward looking laws overlooking worst-hit (nursing homes, POCs, education budget)  
Demand for \$\$ > supply of \$\$

## THREATS

Externalities (lack of vaccine, lethality/speed of virus spread) create a moving goalpost for stakeholders

