



# APPLIED FIELD EXPERIENCE: ARCHANGEL RAPHAEL'S MISSION (ARM)

Bailey Lawrence

Master of Public Policy Candidate

October 2, 2020

# OVERVIEW OF ARM

- History
- Mission
- Target Population
- Activities
  - Community Dinners
  - Community Cuts
  - Mobile Hygiene



# MY INVOLVEMENT



February 22, 2020:  
Community Cuts











Grant-writing



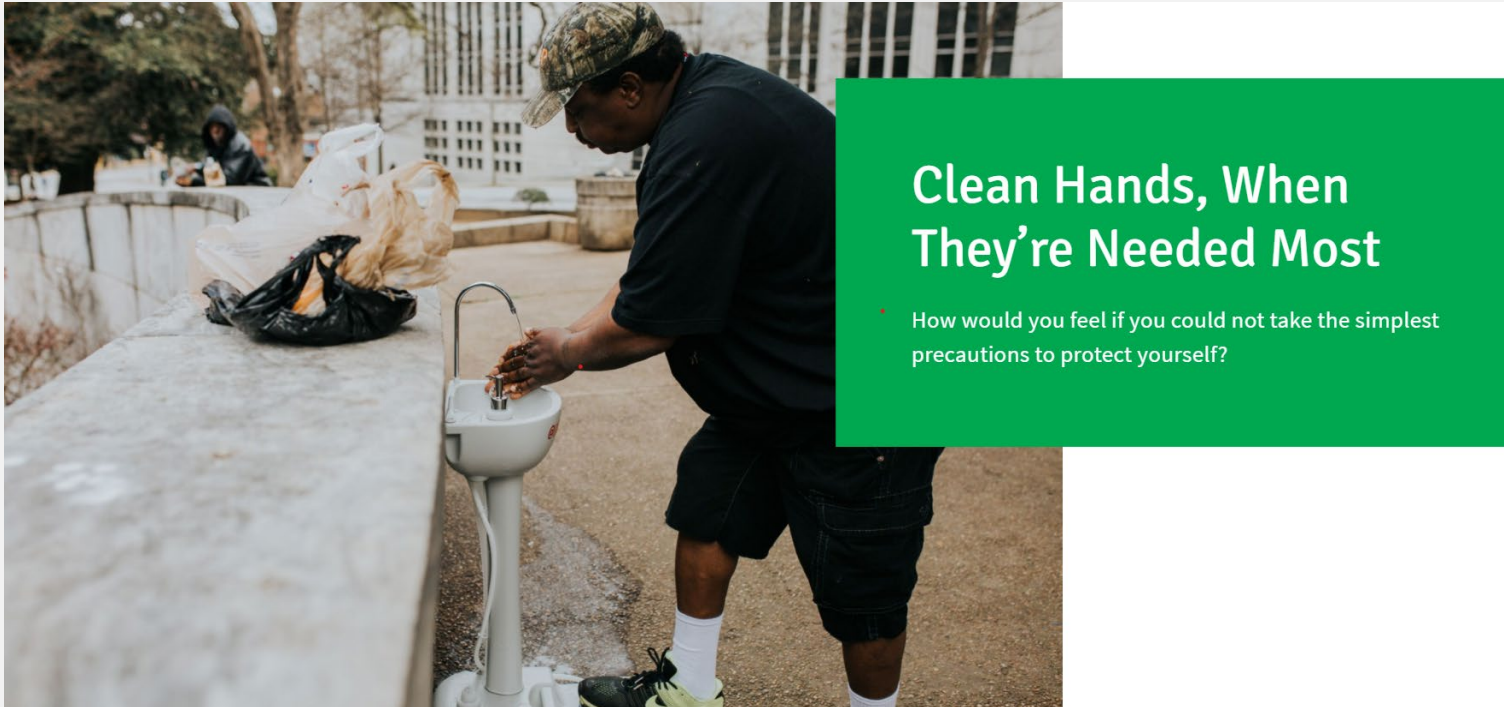
Intern →  
Advancement  
Manager



Volunteer Captain

 <p><b>John El-Maraghy</b> Co-founder</p>	 <p><b>Briane Peters</b> Events Lead</p>	 <p><b>Bailey Lawrence</b> Advancement Lead</p>
 <p><b>Kelsey Lynch RN, BSN</b> Co-founder</p>	 <p><b>Daniella Goncalves</b> Chief of Staff</p>	 <p><b>Marie-Christine Aziz</b> Secretary</p>
 <p><b>Yonatan Gershon</b> Operations Lead</p>		

# MOBILE HYGIENE IN NEW BRUNSWICK



## Clean Hands, When They're Needed Most

• How would you feel if you could not take the simplest precautions to protect yourself?

*Image courtesy of [www.arm.gives](http://www.arm.gives)*

- May – September 2020
- United Methodist Church – New Brunswick, NJ
- Services and deliverables
- Importance of grant-writing *in conjunction with* community engagement



# COMING THIS MONTH: ARM'S MOBILE HYGIENE UNIT (MHU)

2 shower units  hygiene supplies  clean needle exchange  case management 



WHAT HAPPENS WHEN YOU TREAT  
A HUMAN SERVICES NON-PROFIT  
LIKE A BUSINESS?



# WHO DETERMINES NEED? AND HOW?



WHO DECIDES WHAT IS “BEST”  
FOR COMMUNITY MEMBERS?