

MOUNT SINAI HEALTH SYSTEM AND PATIENT SURGE DURING THE COVID-19 PANDEMIC

Kevin Petrozzo





ROADMAP

- My Role in Mount Sinai Health System
- COVID-19 Timeline (Wave I)
- Mount Sinai Health System (MSHS)
 - Virtual Patients
 - Patient Transfers
 - Alternate Care Sites
- Moving Forward



MY ROLE

Retrospective Analysis

Data Management

Patient Transfer Project

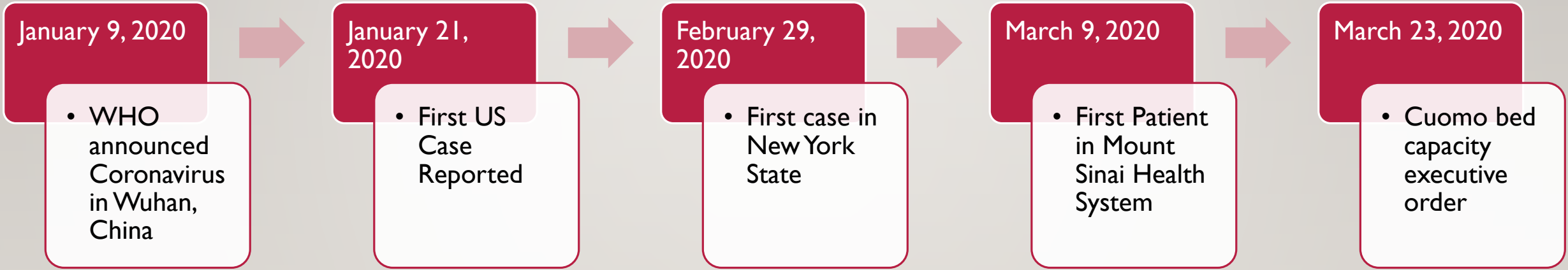


MOUNT SINAI HEALTH SYSTEM OVERVIEW

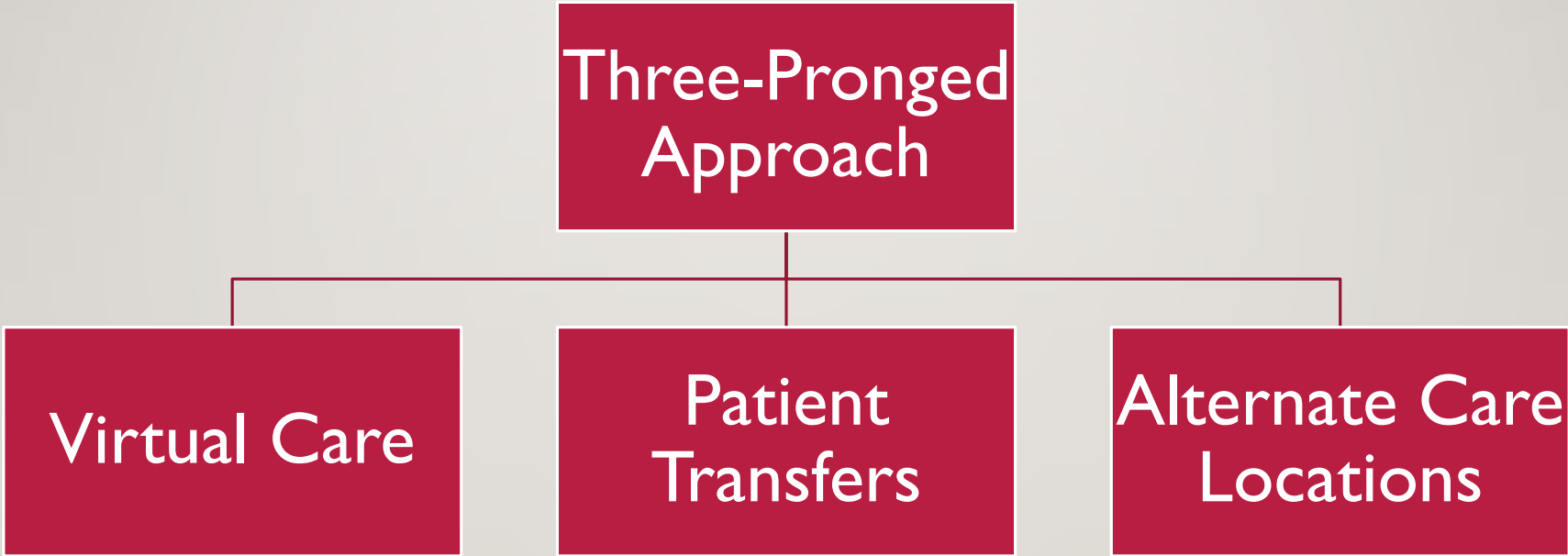
- 43,000 employees
 - 7,300 physicians
 - 2,000 residents and fellows
- 8 hospitals
 - 3,962 beds*



COVID-19 WAVE I

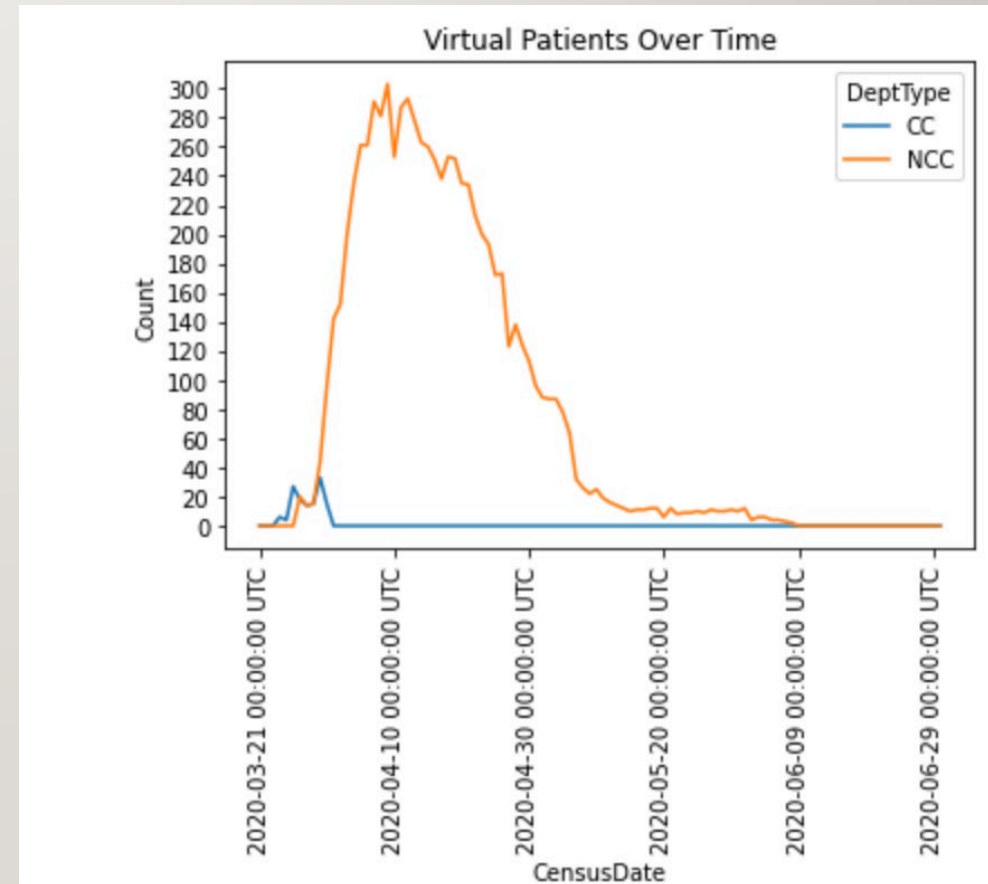


MOUNT SINAI HEALTH SYSTEM'S RESPONSE



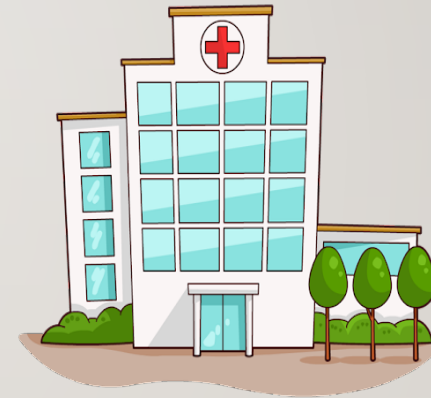
VIRTUAL CARE

- 5 hospitals added telehealth beds
- Peaked on April 9th
- Critical Care and Non-Critical Care



PATIENT TRANSFERS

- Balance patient load
 - Motivation changed during second wave
- Inter and intra facility transfers
 - Between hospitals
 - Alternate care locations



ALTERNATE CARE SITES

- Public and Private Partnerships
- USNS Comfort
- Javits Center
- Samaritan Purse



USNS COMFORT

- March 17, 2020 – Defense Secretary Esper
- March 30, 2020 – Reached NYC
- USNS Comfort
 - 1,000 beds
 - Originally for non-Covid Patients
- MSHS transferred patients to and from



JAVITS CENTER

- FEMA, HHS, DoD, US Army Corp of Engineers
- Original Purpose - Non-Covid Patient
- Primary MSHS Use



SAMARITAN PURSE/CENTRAL PARK

- Samaritan Purse
 - Christian Humanitarian Non-Profit
 - History of health care
 - Integrated into Mount Sinai supply chains
- Central Park Field Hospital
 - 68 bed field hospital
 - Ventilated Patients
 - ICU beds





MOVING FORWARD

- Retrospective Analysis
 - Economic and outcome motivations behind patient transfers project
 - Thank you
- 