

State of New Jersey

New Jersey has one of the Nation's premier State-Level Open Data Portals that establishes standards and best practices for data sharing.





 Agriculture	 Banking & Insurance	 Children & Families	 Civil Service Commission	 Community Affairs	 Corrections	 Education
 Environmental Protection	 Health	 Higher Education	 Homeland Security & Preparedness	 Human Services	 Labor & Workforce Development	 Law & Public Safety
 Military & Veterans Affairs	 Motor Vehicle Commission	 Public Utilities	 State Department	 State Police	 Transportation	 Treasury



Governor's Transparency

[Visit YourMoney New Jersey](#)



Sandy Transparency

[Resources to move forward from Sandy](#)



NJ Geospatial Data Portal

[Visit NJGIN.NJ.GOV](#)



Coronavirus Resources

[24-hour Coronavirus hotline
1-800-222-1222](#)



Home

- [Revenue](#)
- [Expenditures](#)
- [Purchasing](#)
- [Public Payroll](#)
- [Pension](#)
- [Governor's Performance Center](#)
- [Property Tax](#)
- [Debt](#)
- [Annual/Other Reports](#)
- [Executive Orders](#)
- [State Budget Documents](#)
- [Terms](#)

FEEDBACK & ALERTS

- [Email Us Feedback](#)
- [Sign Up for Email Alerts](#)

DEFINITIONS

- [Need Help With a Term?](#)

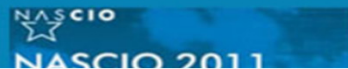
YOURMONEY.NJ.GOV BY THE NUMBERS

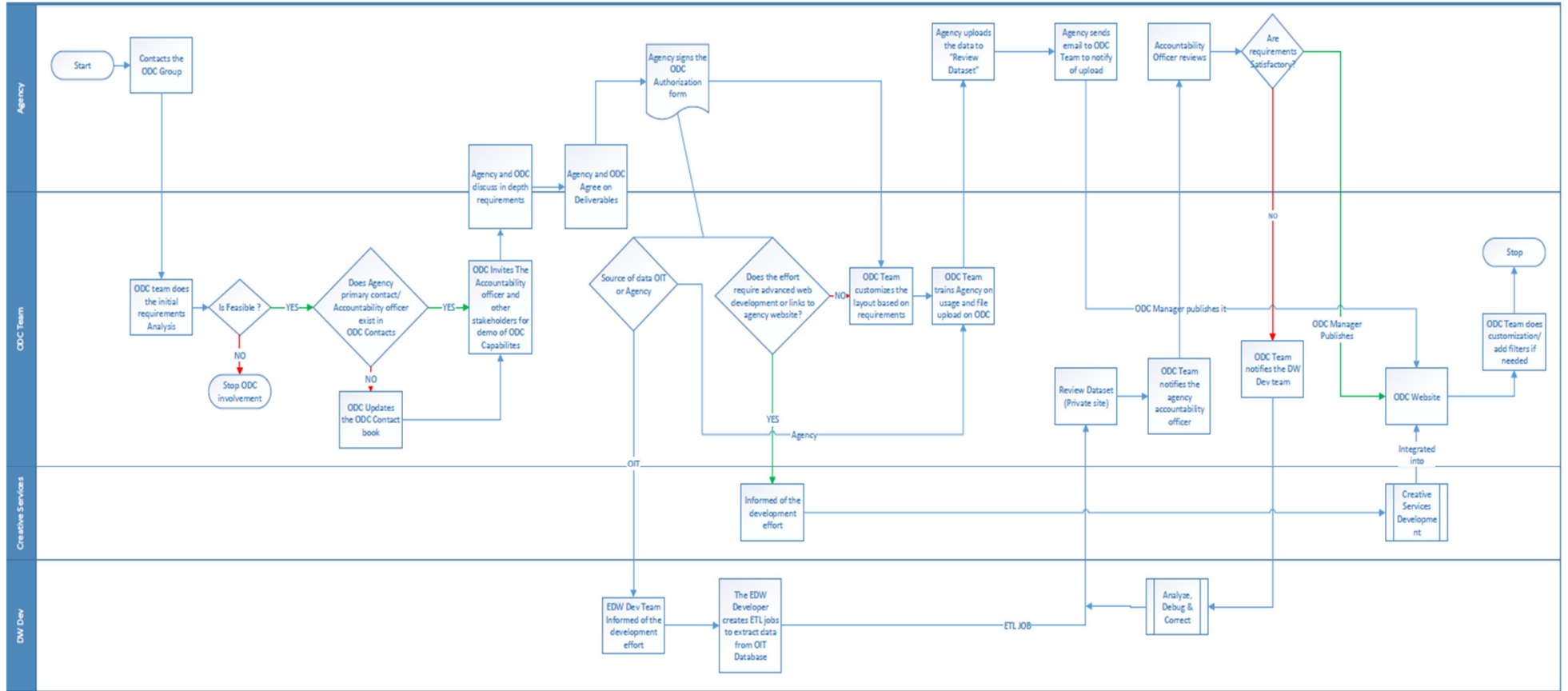
- 91,136** public employee payroll records
- Performance budgeting data from over **twenty-six** agencies
- Twenty** years of State expenditures and revenue data
- 368,599** pension recipient records
- Data from **Seventeen** independent Authorities
- Purchasing data for **60,814** state vendors



[Highlight 1](#)

[Highlight 2](#)







YourMoney Agency Purchasing Multi-Year

Purchasing represents the procurement from vendors of goods and services that are recorded in ▾

More Views
Filter
Visualize
Export
Discuss
Embed
About

DEPARTMENT_AGENCY_DESC	COMMODITY_SECTOR_DESC	VENDOR_NAME	FY_2020	FY_2019	FY_2018	FY_2017	FY_2016	FY_2015	FY_2014
AGRICULTURE	Administrative, Financial, And Managemen...	4IMPRINT INC	0	\$0.00	\$0.00	\$0.00	\$0.00	\$0.00	\$0.00
AGRICULTURE	Administrative, Financial, And Managemen...	AAA CORPORATE TRAVEL	0	\$0.00	\$0.00	\$0.00	\$0.00	\$472.00	
AGRICULTURE	Administrative, Financial, And Managemen...	AAPFCO	0	\$0.00	\$0.00	\$300.00	\$0.00	\$0.00	
AGRICULTURE	Administrative, Financial, And Managemen...	AAVLD AMERICAN ASSOC O...	0	\$0.00	\$0.00	\$0.00	\$300.00	\$0.00	
AGRICULTURE	Administrative, Financial, And Managemen...	ACME MARKETS INC	0	\$133.00	\$0.00	\$0.00	\$133.00	\$0.00	
AGRICULTURE	Administrative, Financial, And Managemen...	ACTION OFFICE SUPPLIES	0	\$0.00	\$0.00	\$0.00	\$0.00	\$0.00	
AGRICULTURE	Administrative, Financial, And Managemen...	ADVANCE STORES COMPAN...	0	\$0.00	\$0.00	\$0.00	\$0.00	\$0.00	
AGRICULTURE	Administrative, Financial, And Managemen...	AMAZON COM INC	0	\$0.00	\$0.00	\$0.00	\$1,063.00	\$0.00	
AGRICULTURE	Administrative, Financial, And Managemen...	AMBASSADOR MEDICAL SE...	0	\$0.00	\$0.00	\$0.00	\$0.00	\$0.00	
AGRICULTURE	Administrative, Financial, And Managemen...	AMERICAN ABSTRACT AGEN...	0	\$0.00	\$0.00	\$0.00	\$0.00	\$0.00	
AGRICULTURE	Administrative, Financial, And Managemen...	AMERICAN ASSOCIATION O...	0	\$0.00	\$0.00	\$0.00	\$99.00	\$0.00	
AGRICULTURE	Administrative, Financial, And Managemen...	AMERICAN COLLEGE OF VET...	0	\$0.00	\$0.00	\$0.00	\$0.00	\$400.00	
AGRICULTURE	Administrative, Financial, And Managemen...	AMERICAN FARM BUREAU F...	0	\$0.00	\$0.00	\$0.00	\$0.00	\$0.00	



NJ SANDY TRANSPARENCY

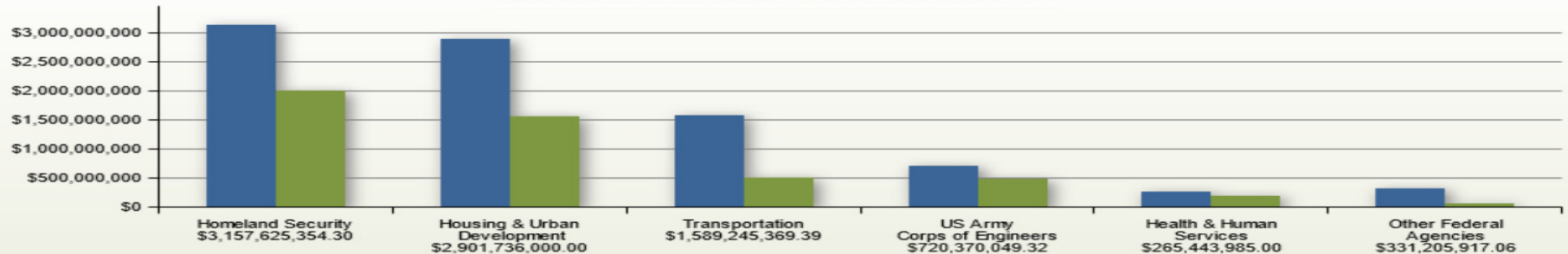
ACCOUNTABILITY • INTEGRITY • OVERSIGHT

- Home
- Contract Center
- Program Information
- Funds Tracker
- Helpful Links and Guidance

Funds Awarded by Federal Departments to New Jersey **\$8.96 Billion**

Recipients include state and local governments, individuals, businesses and non-profits

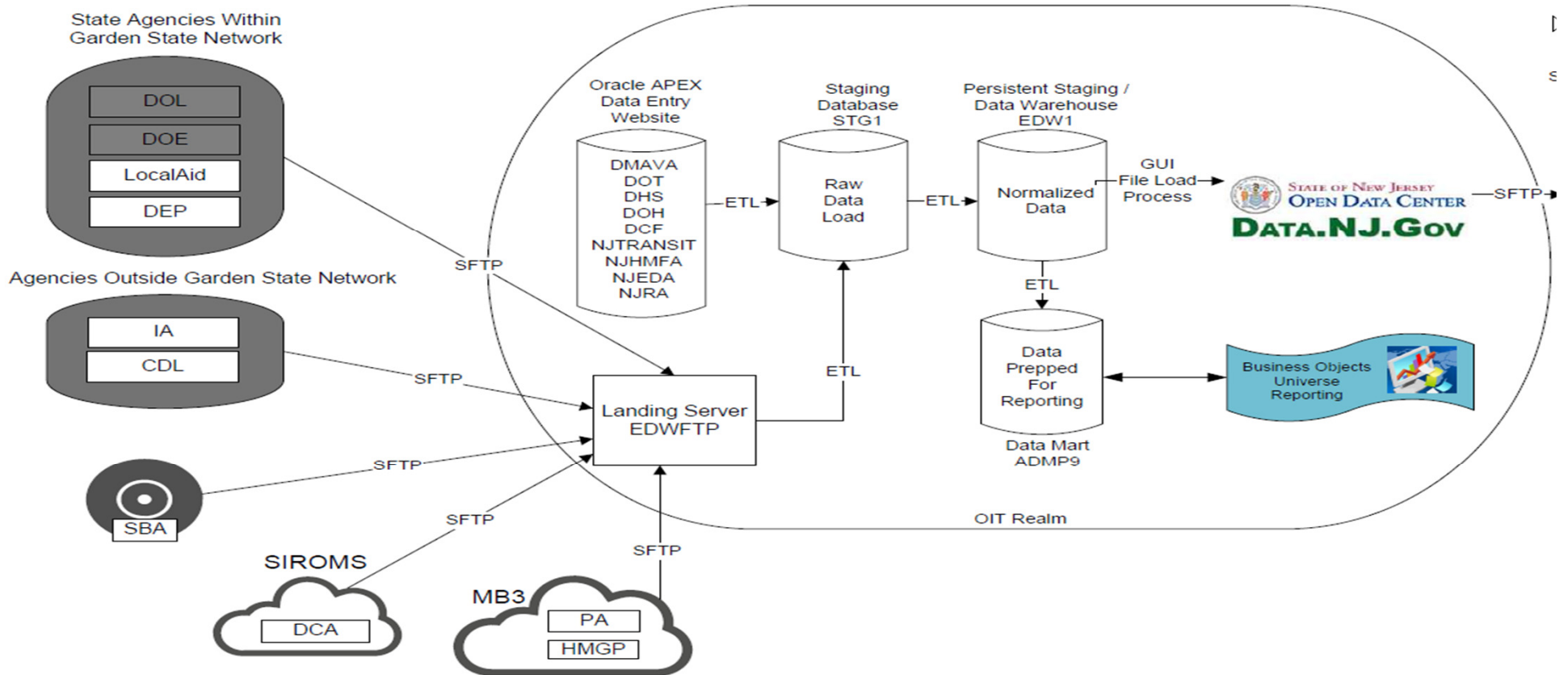
● Total Federal Funds Awarded ● Federal Funds Received



Source: [United States Federal Emergency Management Agency](#)

Information updated by the FEMA on 11/9/2015.

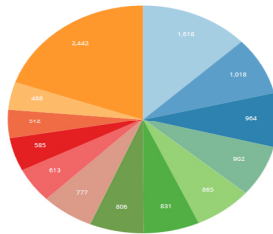
Mouseover the columns of the graph for more details



2009-Present NJ Municipal Residential Permits (with County Totals) - Pie Chart

Government & Finance
More Info

Add Filter (No value) Excluded (No v...)

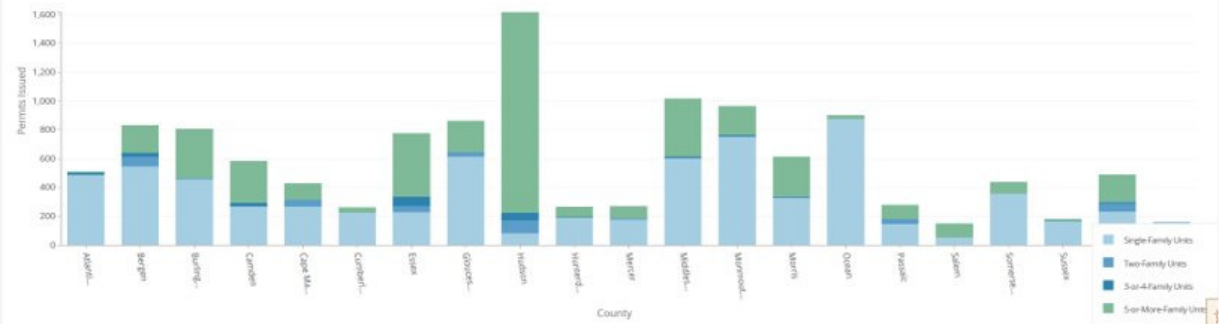


- Hudson
- Middlesex
- Monmouth
- Ocean
- Gloucester
- Bergen
- Burlington
- Essex
- Morris
- Camden

2009-Present NJ Municipal Residential Permits (with County Totals) - Stacked Column Chart

Government & Finance
More Info

Add Filter (No value) Excluded (No v...)



View Source Data

Year	Status	Area	County	Municipality	Total Units	Single-Family Units	Single-Family Value	Two-Family Units	Two-Family Value	3-or-4 Family Units	3-or-4 Family Value	5-or-More Family Units	5-or-More Family Value
2009	Final	Atlantic	Absecon		0	0	\$8,000	0	\$0	0	\$0	0	\$0
2009	Final	Atlantic	Atlantic City		58	51	\$5,675,743	0	\$0	7	\$42,500	0	\$0
2009	Final	Atlantic	Brigantine		2	2	\$2,548,407	0	\$0	0	\$0	0	\$0



- The New Jersey Selective Vendor Assistance (NJSAVI) dataset has already proven to be a valuable new tool that is helping the State raise the visibility of certified vendors, thereby establishing additional pathways to greater opportunities for these firms. For example, as of November 16, 2024, end users have downloaded NJSAVI data over 1,800 times. Further, there are now over 8,600 application programming interfaces (API) connecting with NJSAVI data, meaning there is substantial on-going automated access to the data source.

The Three Big Benefits of Open Data



One Time Effort

Data is put into the online portal one time, reducing repetitive tasks, and is updated regularly to keep utilized information current.



Provides Broad Access

Data is delivered on a singular platform that is available across departments and to the public.



Build on Top of Data

Data is accessible to citizens, allowing the public to build applications on top of, and from, the original data – extending the utility of a single dataset.

